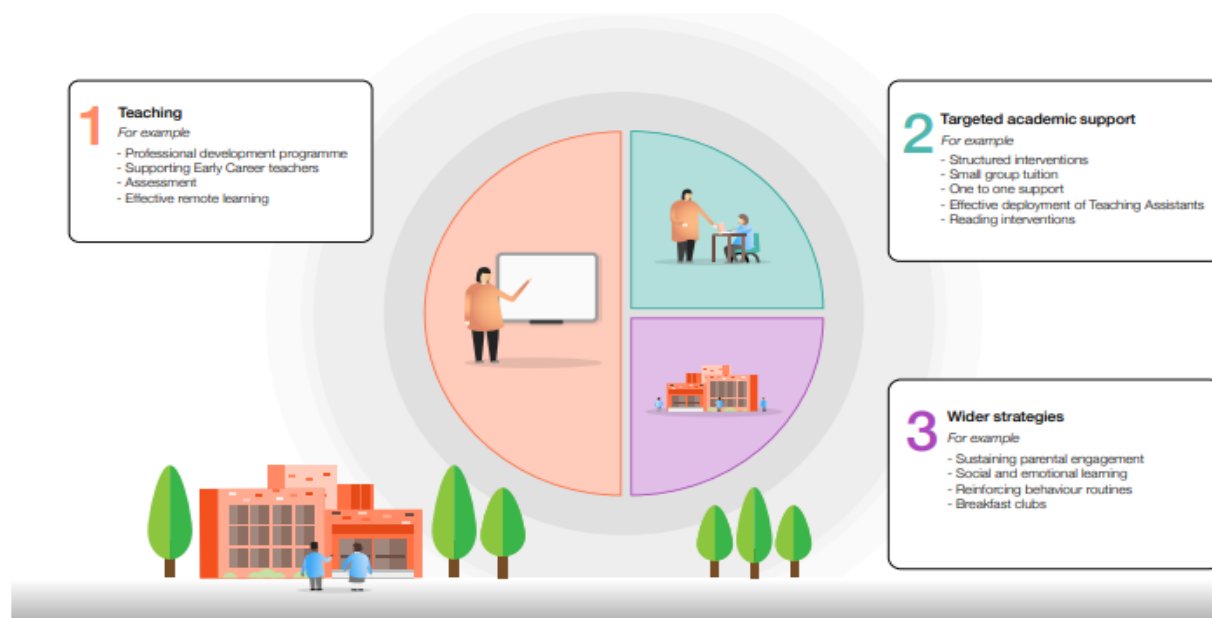




Anton Infant School Catch Up Premium Action Plan and Spending September 2020 – July 2021

1. Summary information					
School	Anton Infant School				
Academic Year	2020-21	Total Catch up budget	£14,240	Review by FGB	January 2021
				Date for internal review of this strategy	February 2021
Funding based on total number of pupils	178	Total Spend	£25,301	Review by FGB	March 2021
				Date for internal review of this strategy	April 2021



Our Aims for children	What we provide	Lead	Cost	Review and impact Spring 1	Review and impact Summer 2
Teaching - Supporting great teaching					
<ul style="list-style-type: none"> Identify gaps in knowledge Teachers are trained with most up to date information to help close gaps Children are supported both academically and emotionally. Children feel safe and happy at school. All children make good or better progress and achieve in line with year group expectations. 	HIAS support in reading and PE. Visits to school and INSET day planned.	SLT	2 days of Hampshire time £1220		Staff are more confident in teaching differentiated PE lessons. School data – reading (target 75%+) Year 1: 77% Year 2: 76%
	Staff attended HIAS training on catch up curriculum	Subject leads	£300		Staff used HIAS planning for Autumn term to help catch up children. Summer term used HIAS to help focus on teaching key objectives.
	Subject leaders in core subjects have shared planning with teachers to support with catch up curriculum				
	Staff meetings held for core subjects to share ideas of how to support children back in school	Subject leads	No cost		Shared key HIAS messages to help support the children
	Subscribed to Hampshire Moodle+ to allow subject leads to access the most up to date planning and resources to support the catch up curriculum	SLT	£340		Access HIAS maths planning along with additional Moodle + resources to support the planning and resourcing of subjects.
	PSHE lead attended courses to support staff in how to help staff and children's well being.	PSHE lead	£500		Attendance Staff and Children good despite COVID
	Additional resources have been bought to ensure each child has their own set of stationary and also there are enough resources to support learning in each bubble.	SLT	£1000		Tried to minimise the spread of infection across the classes
	Training for all staff on Google classroom	SLT	£300		Staff were confident to use google classroom to set home learning

Teaching - Pupil assessment and feedback					
<ul style="list-style-type: none"> Children's progress and attainment is monitored regularly to ensure any gaps are identified early. Support is put in place for children as soon as possible. School and home work in partnership to support learning. 	Data drops half termly and pupil progress meetings held in staff meeting half termly to closely monitor children's attainment and progress.	SLT All staff	£720		Staff could identify gaps in learning quickly and address them to help the children catch up
	Off the back of pupil progress meetings additional support put into place for specific children, in school and at home, to try to close the gap.	All staff	£4000		Intervention groups run in the afternoons to help close gaps
	PSHE monitoring behaviour half termly. Behaviour policy revised to adhere to class bubbles.	PSHE lead	£100		Ensured consistency across the school. Routines and regulations remained in place for all chn
Target support - 1:1 and small group tuition					
<ul style="list-style-type: none"> Identified children will make accelerated progress in their learning. Gaps in learning will decrease. SEND children are monitored regularly along with vulnerable groups. 	Additional adult 3 x times a week in Year 2 to support in maths and literacy. Adult takes small group out to teach separately in maths and literacy sessions.	SLT	£4,000		Closed the gap in chn learning, esp maths School data: Maths: 84% Writing : 69% Phonics : pass rate 95%
	Additional adult 3 x times a week in Year 1 to support in phonics, literacy and maths. Adult supports in both classes to allow phonics groups to be split into smaller groups. Adult works in both classes to take out groups in maths and literacy sessions.	SLT	£6,100		Closed the gap in chn learning, esp maths School data: Maths: 78% Writing : 75% No official phonics data School data: 68% pass rate To be retested in Dec 21 Progress extremely good across the year

	SENCO to implement and deliver half termly monitoring plan. SENCO to support teachers in producing pen profiles and SAPs.	SENDCO	No additional costs		Raised the profile of SEN chn and the provision for all chn with teachers
Target support - Intervention programmes					
<ul style="list-style-type: none"> Identified children will make accelerated progress in their learning. Year 1 and 2 children will increase their phonics knowledge. Staff will be up to date with training to support children who need additional support 	Intervention groups for specific children to support in phonics in the afternoon in Year 2.	Year 2 lead	£1,100		Phonics : pass rate 95%
	Intervention groups for specific children to support in phonics, reading and writing in Year 1.	Year 1 lead	£1,100		School data: Maths: 78% Writing : 75% No official phonics data School data: 68% pass rate To be retested in Dec 21 Progress extremely good across the year
	Staff to retrain in Team Teach training as unable to do this during lockdown	SLT	£1150		Key staff attended refresher training so that we now have trained staff on site to be able to use Team Teach as needed
Wider Strategies - Extended school time					
<ul style="list-style-type: none"> Children are kept safe on school site and allows all children their educational entitlement hours. 	Staggered start and finish times to make the site safe – school allows siblings to come into school early and stay until latest collection time. Adult in each class supervises the children in school outside of their normal class school hours.	SLT	No additional costs		Minimised amount of people on site at any one time to minimise infection spread. Low COVID cases reported
	Staff being deployed to man the gates at the beginning and end of the day.	SLT	£1500		Parents adhered to the one way system and also to the staggered start and finish times

Wider Strategies					
<ul style="list-style-type: none"> Whole school community are kept safe when on school site. Children are able to access resources at playtimes to support interactions with peers. Staff have strategies to support other members of staff and children. 	Supply staff with PPE and ensure hand sanitiser is used regularly throughout the day.	SLT	£291		Reduced the spread of infection. Low COVID cases reported
	Additional first aid boxes made to ensure that 1 in each class. Additional cleaning products in every class	SLT	£120		Reduced the spread of infection. Low COVID cases reported
	Well being resource emailed to all staff to support	SLT	£160		Low staff absence
	SLT and Year leaders to receive coaching to support with on going needs following coming back to school.	SLT	£1300		Leaders felt supported in how to manage year groups in challenging times. Low staff absence
	Improvements made to outdoor environment to support children. Additional resources bought for children to use at play/lunchtimes in light of class bubbles.	SLT	Sports premium money used to purchase equipment		Behaviour better on the playground. Feedback from children and staff about how much they are enjoying using the new areas.
Total funding made available to school:	£14,240		Total spent:	£25,301	